



#1534 Hydraulic Squeeze Head Holder

HI-HOG FARM & RANCH EQUIPMENT LTD.

8447-23rd Avenue N.E.
Calgary, Alberta
T1Y 7G9

Phone: 403-280-8300
Toll Free: 1-800-661-7002
Fax: 1-403-280-2441

Visit us at

www.hi-hog.com

Data Entered: 11/17/2025

Office: 403-280-8300

www.hi-hog.com

toll free sales: 1-800-661-7002

Table of Contents

PA Squeeze Head Holder Attachment	2
Hydraulic Squeeze Model	3
Attachment of Brackets	4
Attachment of Line-lock	8
Directional Control Valve [re-configure]	9
Hose Installation	10
Head Holder Height Adjustment	14

PA Squeeze Head Holder Attachment

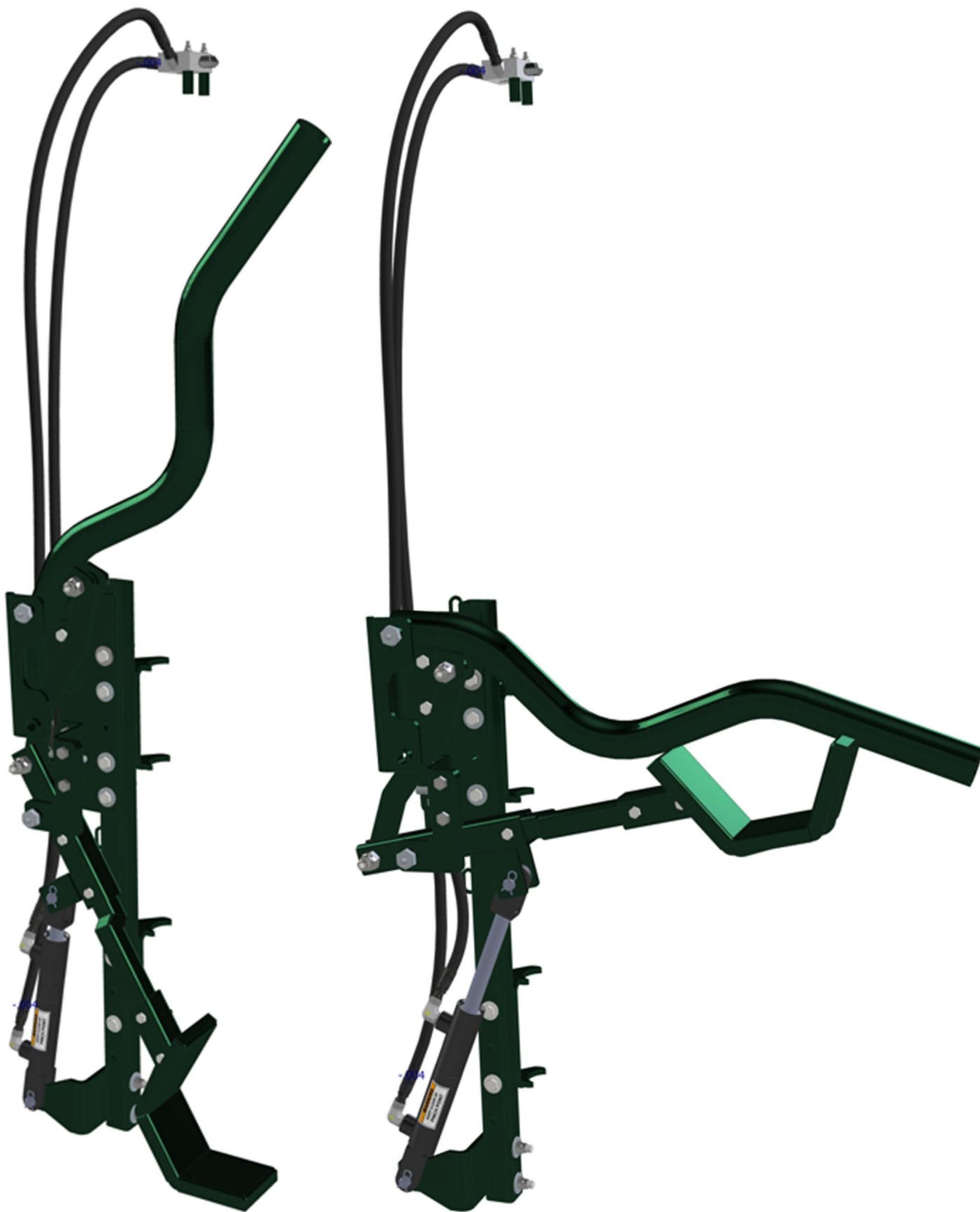
The Squeeze Head Control Arm is an alternative to the current Neck Extender currently available on our manual PA Squeeze and the Hydraulic PA Squeeze. There will be three separate styles to choose from. The model which mounts to the PA Squeeze equipped with Auto Headgate is a fully reversible, bolt on unit which mounts directly to the squeeze body. To enable ease of installation, this style is available in both the Righthand and Lefthand models.

The second style can be mounted to both the PA Squeeze equipped with Manual Headgate or to the Hydraulic PA Squeeze with hydraulic headgate. This second style is also a bolt on model unless your squeeze was made prior to 2023 in which case it will become a weld-on kit which is welded directly to either the left or right headgate. This style is also fully reversible and can be supplied in both the Righthand and Lefthand models.

Both styles listed above have a manually operated mechanism which uses a closed hydraulic circuit with a manually operated valve to lock the control arm in place. These first two styles are typically factory assembled to mount onto the right-side of the squeeze and they must be fully disassembled and then reassembled to fit onto the left-side of the squeeze.

The following instructions apply to the third style which mounts to the Hydraulic PA Squeeze equipped with Hydraulic Headgate and bolts directly to the RH head gate. It also comes with weld-on brackets to fit earlier model made prior to 2023. This model will tie into the spare ports provided on the main Direction Control Valve of the Squeeze. The mechanism of this system is operated by using the levers on the main directional control valve.

Hydraulic Squeeze Model



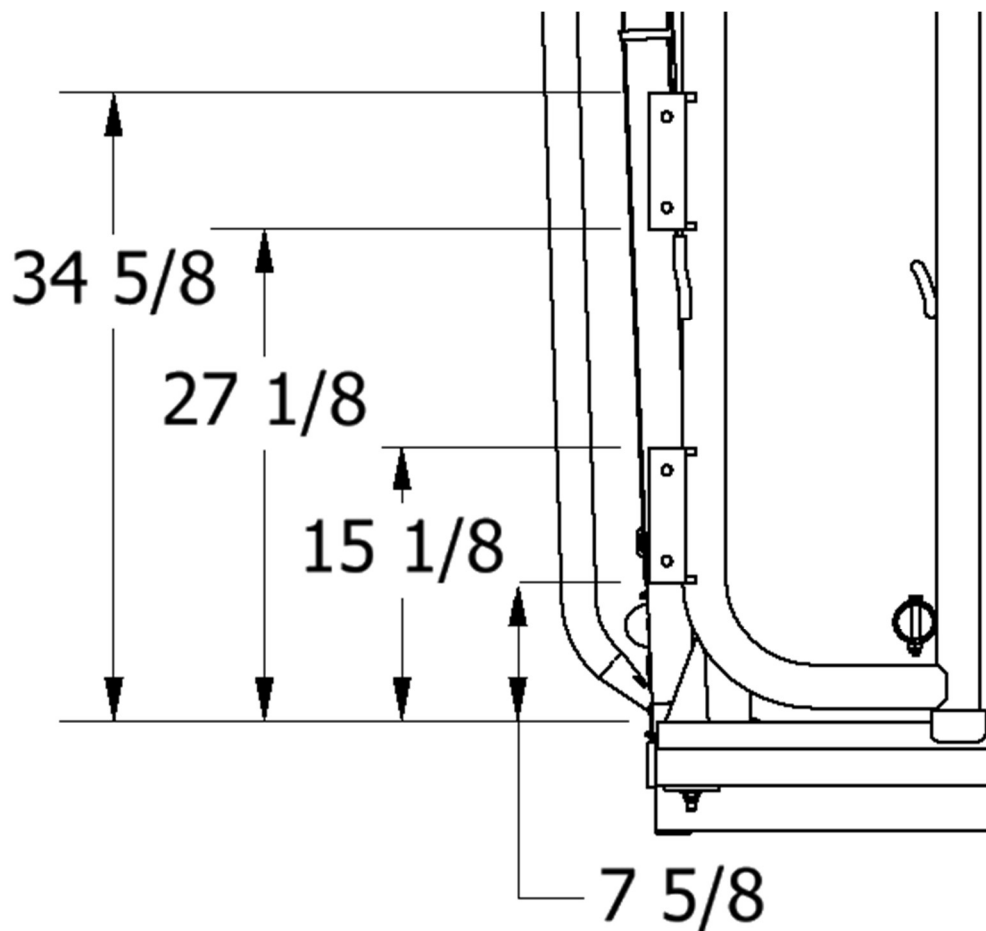
Office: 403-280-8300

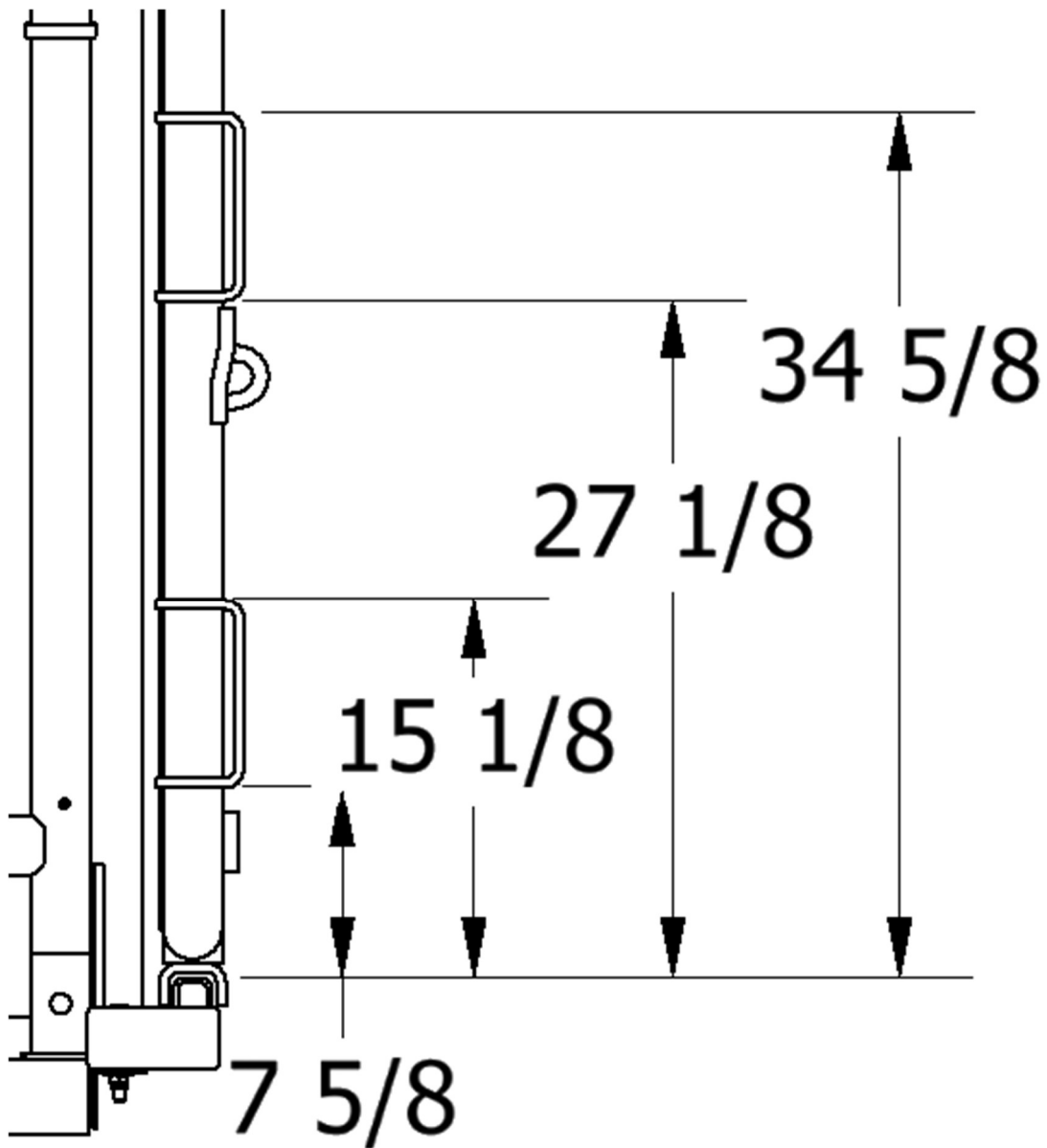
www.hi-hog.com

toll free sales: 1-800-661-7002

Attachment of Brackets

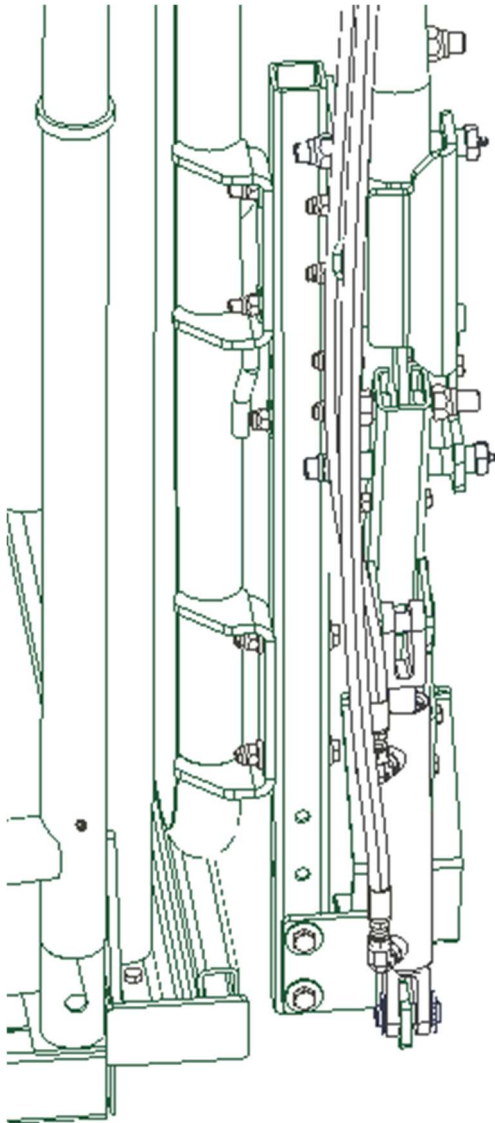
1. Before beginning your Head Holder install, ensure the power pack is turned off and unplugged.
2. The next procedure is the installation of the mounting brackets of the Head Holder. In all cases the Head Holder will come pre-assembled as shown in the image on the previous page and it will be installed on the Right-Hand Head Gate. Right being the right side of the animal in the squeeze.
 - a. The only option for installing the brackets is welding them in place.
 - b. ENSURE the entire area surrounding your squeeze is free of anything flammable. Always have quick access to water and or fire extinguishers.
 - c. Using the following drawings, locate the areas to be welded and grind away all the existing painted surface to ensure you have a good weldable surface. The dimensions are taken from the top surface of the lower Head Gate guide tube. For clarity, only the mounting brackets are shown. The rest of the Head Holder is hidden from view.





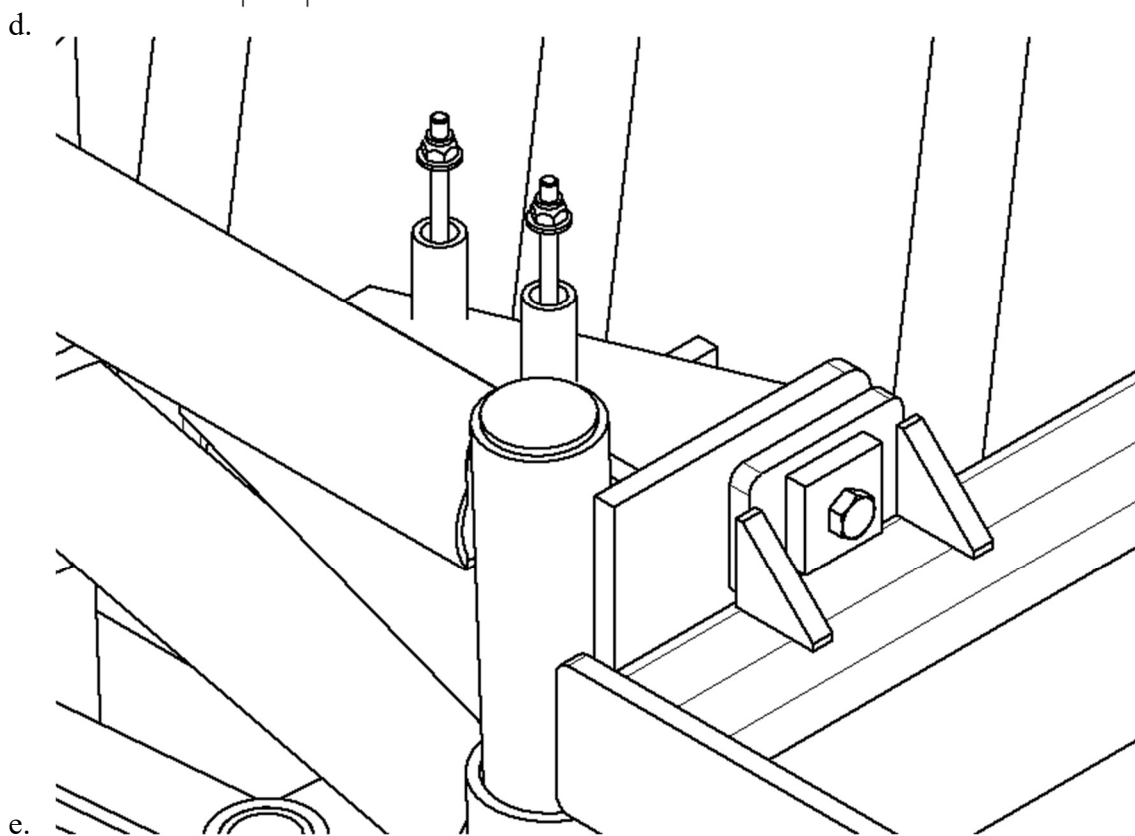
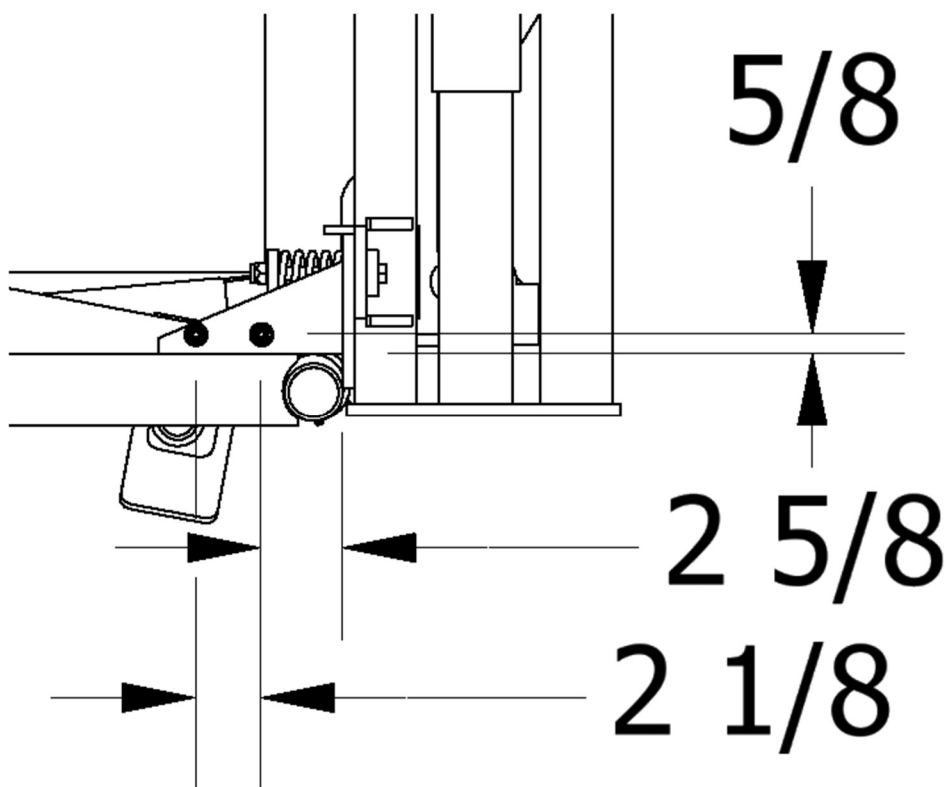
e.

- f. The Head Holder can now be welded into place. Use a stack of wooden blocks to carry the weight of the Head Holder and a second set of hands would be good to help keep the Head Holder in proper alignment prior to tack welding the brackets to the Head Gate. With the top pivot arm in the up position, ensure you have clearance between it and the Headgate Frame. There should be sufficient access to the mounting brackets which allows complete welding of the brackets without having to dis-assemble the Head Holder. Make full all-around welds to all contact points of the brackets.



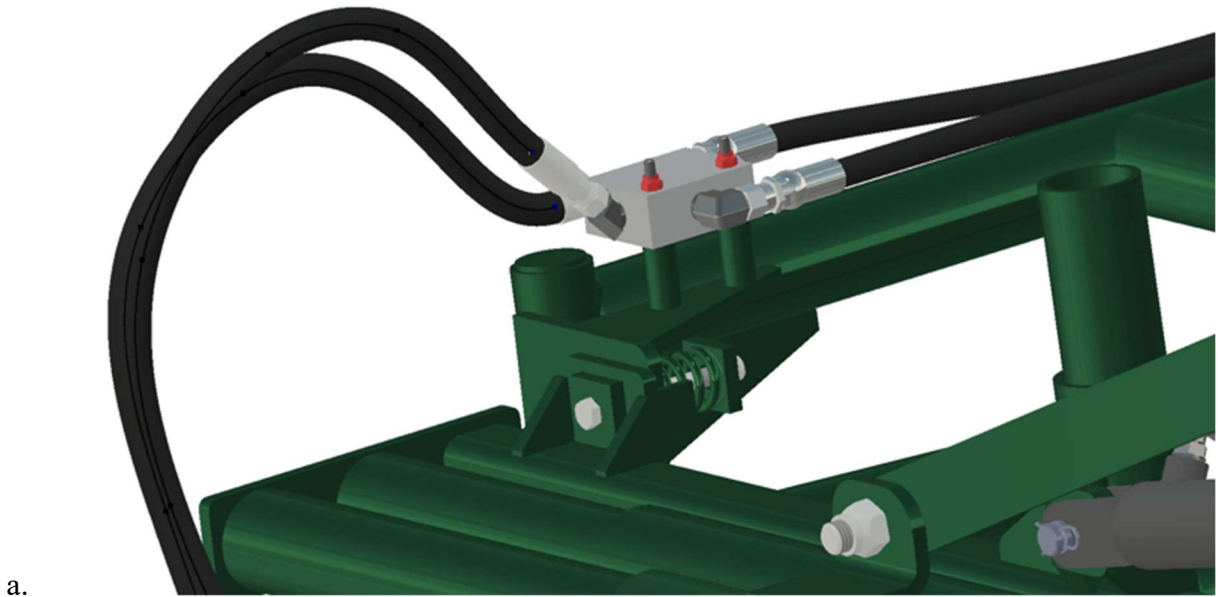
g.

3. The next step is to install the mounting brackets [bolts] which hold the hydraulic line lock. If you have newer squeeze, the following Link Lock bolts may already be installed.
 - a. The only option for the installing the brackets [bolts] is welding them in place.
 - b. ENSURE the entire area surrounding your squeeze is free of anything flammable. Always have quick access to water and or fire extinguishers.
 - c. Using the following drawings, locate the areas to be welded and grind away all the existing painted surface to ensure you have good weldable surface. The dimensions are taken from the top surface of the Squeeze Frame corner gusset. For clarity, only the mounting brackets are shown. The rest of the Head Holder is hidden from view.



Attachment of Line-lock

4. The next step is to secure the Line Lock onto the anchor bolts. Secure with 5/16" nuts.



5. The lines exiting running to the directional control valve from the line-lock are to be installed next, but the lines on the valve may require reconfiguring.

Directional Control Valve [re-configure]

6. There will be some adjustment required when you're ready to install the hydraulic lines. The control valve is mounted to the underside of the Control Arm. This is a compact unit where the lines and fittings are in very close proximity to each other. This image is typical for most squeezes. It shows all the hoses with 90-degree fittings attached to the underside of the valve.
 - a. First ensure the hydraulic power is disconnected from power.
 - b. You are now going to relocate the return line and fitting. This is the largest hose and fitting shown on the extreme left of the image below.
 - c. Remove the plug on the side of the valve directly above the return line.
 - d. Switch positions of this plug and the return line with adapter.



- e. There is a U-Bolt which holds all the lines in place against the pivot post. Remove this U-Bolt. The bolt is no longer large enough to contain all the hydraulic lines
- f. Now you should have good access to the unused, fourth bank of the control valve. Remove the two plugs on this bank and replace with the supplied fittings. The Hydraulic lines can now be installed

Hose Installation

7. While installing the hydraulic lines from the Head Holder line lock to the control valve, follow the same route as the lines within the cluster of hoses to prevent the hoses from binding when the Control Arm pivots from one side of the squeeze to the other.
 - a. The U-Bolt for holding the Hydraulic Lines in place can now be re-installed. All the hoses should fit in the U-Bolt except for the Return Line [largest hose].
 - b. The Return line can be tied off against the cluster of hoses. The following image shows a typical four bank valve install.

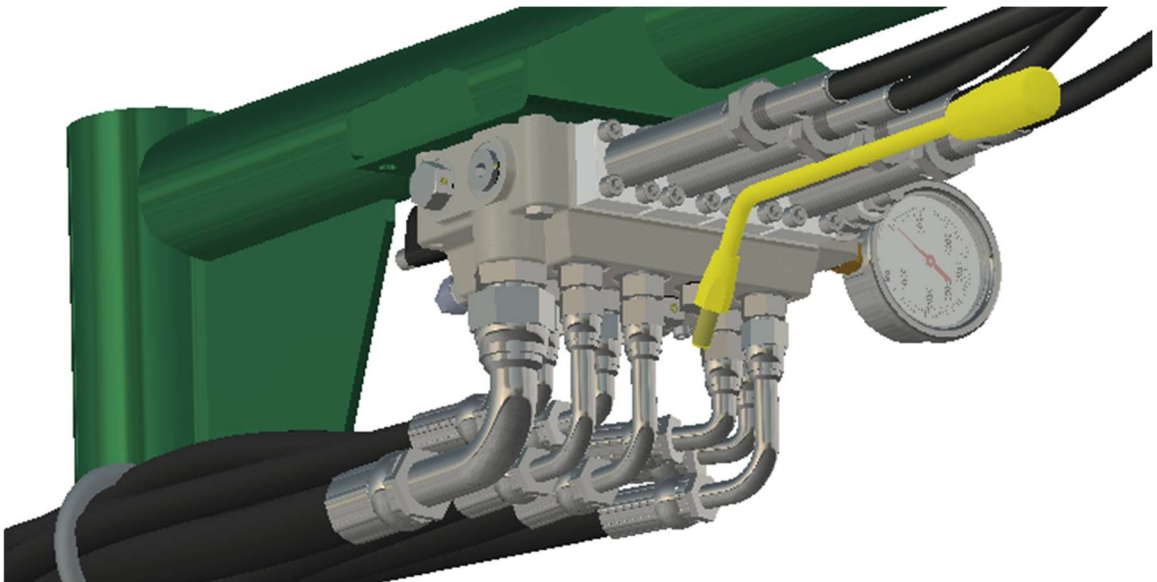


c.

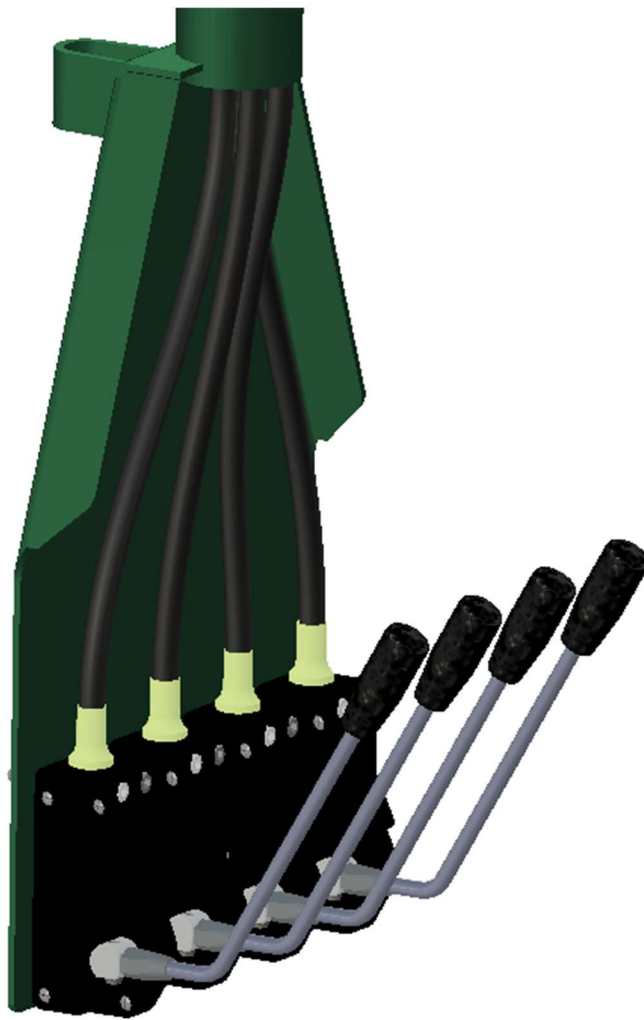
8. Your squeeze will have 4 cable controls which run along the control arm. Most likely you will have only 3 of these cables equipped with a control lever as shown.



- a.
b. You'll need to locate and install the fourth control lever. Typically, the fourth lever is stored next to the directional control valve as shown.



c.

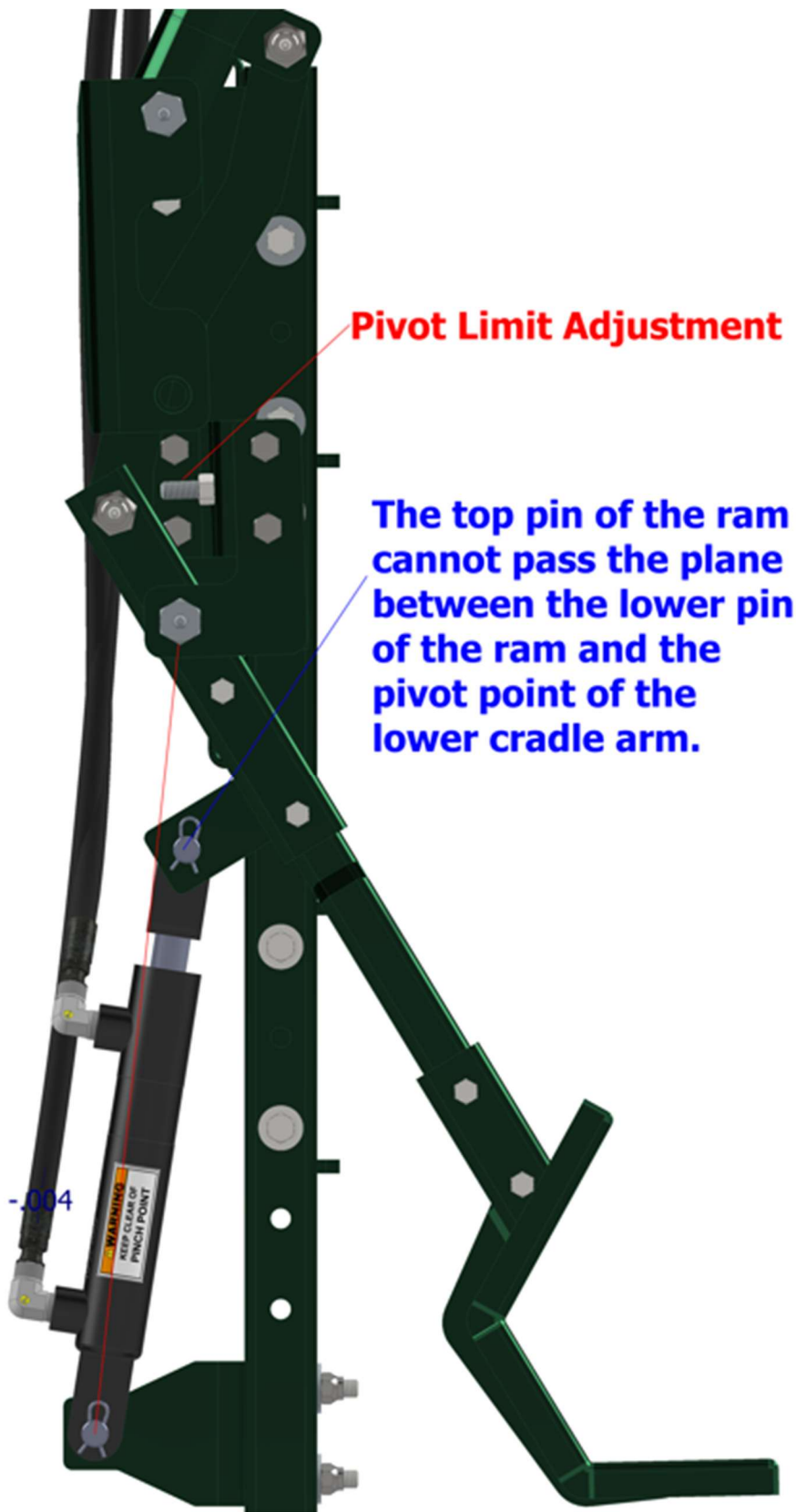


d.

9. At this point you can now plug in and/or start your power pack. Run the Head Holder through several cycles to ensure any trapped air in the system flows back into the oil reservoir. After this is done leave the Head Holder in the engaged position. Check to see if there is any free movement in the pivot arms. If there is movement, you will need to bleed the lines. To do this crack the line fittings going into the cylinder. Work the controls until all air escapes. Retighten the lines and recheck the system. Repeat again if necessary.

10. The Head Holder has many small precision fit components. The tight tolerances ensure a smooth and quiet operating piece of equipment. All the pivot points are equipped with grease nipples. To ensure a long life for your head holder keep these points well lubricated at all times.

11. When install is complete, check your fluid levels in the power pack. Ensure you use the correct fluids in your system. The standard fluid supplied in all units is Co-op IHMV ISO 22 hydraulic fluid.



12. There is one major difference between the Hydraulic controlled Head Holder and the Manually operated model. The movement of the pivot arms in the manual is controlled by a handle connected directly to the lower arm and the movement of the hydraulic model is controlled by the hydraulic cylinder. With the hydraulic model it's necessary to limit how far the pivot arms retract. Limiting the movement will prevent the Ram top pin from passing the **plane** of the ram lower pin and the lower pivot point of the link connecting the upper and lower pivot arms. If the top pin comes too close to the plane, engaging the cylinder may cause damage. *It would be like you jumping from a platform and landing without your knees slightly bent.*

a.

Head Holder Height Adjustment

13. In most instances the factory setting for the height of the Head Holder will work for you. However, there are three optional height settings to choose from. These settings are in 2-1/2" increments. This image shows the mid setting.

- a. If you wish to adjust the Head Holder height, simply loosen the **2 upper and 2 lower red bolts** connecting the Head Holder Frame to the two brackets welded to the Head Gate. Before removing these bolts, ensure you have a secure hold on the unit with your fingers away from any possible pinch points. With bolts removed raise/lower the unit and align the bolt holes in the **new** position. Replace and tighten the bolts.
 - i. If you're wanting to use the lowest height setting, you must also remove the upper **yellow bolt** connecting the Head Holder Backing Plate to the Frame, then lower the complete assembly and reinstall all the **red bolts** to connect the assembly to the headgate mount brackets. Now reinstall the **yellow bolt** into the vacant just above the other **yellow bolt**.
 - ii. If you're wanting to use the highest height setting, you must also remove the lower **yellow bolt** connecting the Head Holder Backing Plate to the Frame, then lower the complete assembly and reinstall all the **red bolts** to connect the assembly to the headgate mount brackets. Now reinstall the **yellow bolt** into the vacant just below the other **yellow bolt**.
- b. Always ensure there are 4 bolts connecting the Head Holder Backing Plate to the vertical Frame.

